

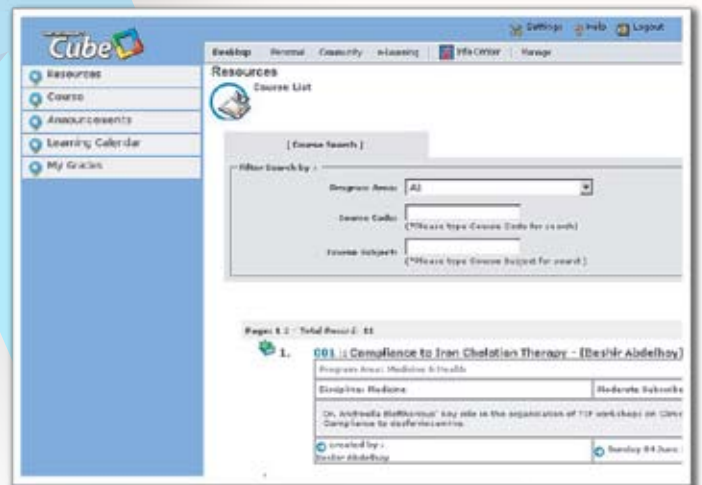
LearningCube



LearningCube allows you to provide members of your community with tools to develop, implement and share effectively the available technology to improve their intra and inter-organizations learning process. You can deliver sophisticated teaching and training to geographically dispersed students, employees or customers whenever and wherever they need it.

With Mitechsoft LearningCube System

- Users can create their own complete online learning contents in a few simple steps by using a user-friendly "What You See is What You Get" (WYSIWYG) web editor.
- Support multiple forms of contents such as text, graphic, sound, video and support various languages.
- Course owners are able to assign certain users to co-manage the portfolio effectively. They are also able to assign various access levels of the contents and features to certain group of users.
- Course owners may track the usage of their learning contents by the respective subscribers.
- Course owners may conduct quiz and examination related to each portfolio to the respective subscribers.
- Course owners may create many examination sessions from one quiz. This will enable them to manage these sessions separately for different types of students. Questions for the quiz can be displayed in a randomized form on a per user basis.



Want to see more?

Please contact us for demo session:

PT. ONE SYSTEM SOLUTION
 Graha Iskandarsyah Lt. 2
 Jl. Raya Iskandarsyah Raya 66C
 Jakarta 12160
 Indonesia

Jacob Medah
 Mobile : 0813 8955 4561
 Tel : (+62-21) 720 9976, 720 9978
 Fax : (+62-21) 720 9981

website : <http://www.oness.co.id>
 email : jacob@oness.co.id